

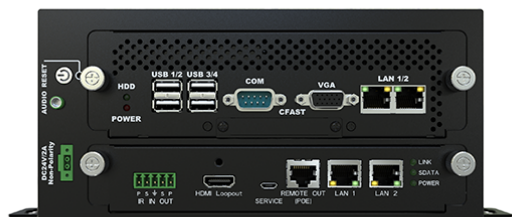


MicroBox-1200A-E01-003-DR

Wall Mount / DIN Rail Mount Industrial Thin Client

Features

- Intel Celeron J1900 @ 1.99GHz / Atom E3845 @ 1.91GHz CPU
- 4GB DDR3 SO-DIMM
- Dual Gigabit Ethernet
- 1 x RS-232/422/485 BIOS Selectable
- 4 x USB 2.0 ports
- 330 feet Remote KVM Extension
- ThinManager Ready

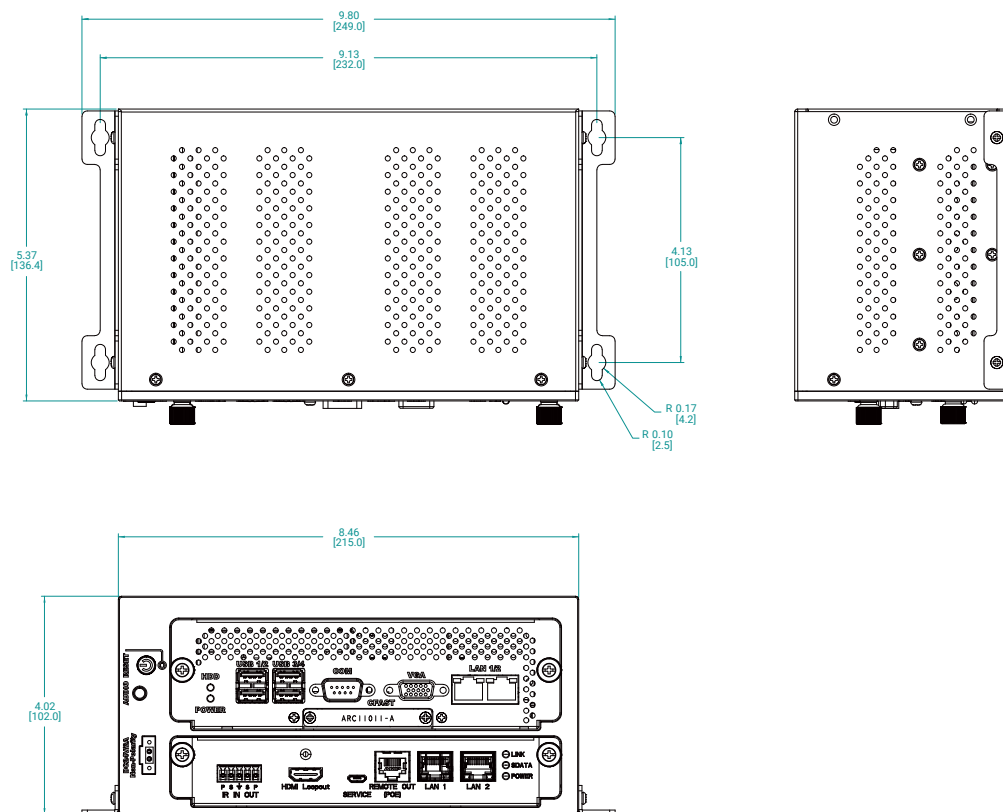


Specifications

Model Name	MicroBox-1200A-E01-003-DR	ARD-1007-A00-RX Receiver
System		
CPU	Intel Celeron J1900 @ 1.99GHz / Atom E3845 @ 1.91GHz CPU	N/A
Chipset	Bay Trail	N/A
Memory	4GB DDR3 SO-DIMM	N/A
Video Controller	Intel Gen7 Intel Graphics DX 11, OGL3.2	N/A
Video Output Interface	VGA & HDMI Loopback	N/A
Storage Option	N/A	N/A
Compact Flash	N/A	N/A
Keyboard / Mouse	USB	N/A
Audio	Line Out	N/A
Watchdog Timer	Programmable 1 - 255 sec	N/A
Remote Boot	ThinManager Ready, PXE	N/A
Expansion Slot	N/A	N/A
I/O Communication		
USB Port	4 x USB 2.0 for USB Devices	4 x USB 2.0 for USB Devices
Serial Port	1 x RS-232/422/485 BIOS Selectable	1 x RS-232
IEEE 1394	N/A	N/A
LAN	2 x Gigabit	2 ports 10/100 Hub
Parallel	N/A	N/A
GPIO	N/A	N/A
Smart Battery		
External Smart Battery	N/A	N/A
OS Support		
OS Support	N/A	N/A
Power / Thermal Specs		
Power Requirement (Max)		Powered by MicroBox-1200A
Power Consumption (Max)		N/A
Recommended Power Supply		N/A
Heat Dissipation		N/A
Physical Information		
Mounting	Wall Mount, DIN-Rail Mount	N/A
New Weight	--	--
Dimension (W x H x D)	18.87x 1.73 x 6.96 inch 479.3 x 44.0 x 176.7 mm	6.19 x 1.45 x 4.04 inch 157.2 x 36.8 x 102.6 mm
Environmental		
Operating Temperature	0~50°C (32~122°F)	N/A
Storage Temperature	-20~60°C (-4~140°F)	N/A
Relative Humidity	0~95%	N/A
IP/NEMA Rating	meets IP50	N/A
Certification	N/A	N/A

Dimension Drawing

Model Name: MicroBox-1200A
Size Unit: inch(mm)



Ordering Information

Item	MicroBox-1200A-E01-003-DR
CPU	Intel Celeron J1900 @ 1.99GHz / Atom E3845 @ 1.91GHz CPU
Memory	4GB DDR3
Storage	N/A
Audio	Line Out
Remote Boot	ThinManager Ready
Power Supply	110/220VAC Input DIN-Rail